



DÜMMEN
ORANGE®



Poinsettias
2025 Highlights

INTRODUCING: POINSETTIAS

New Varieties, Fall Favorites & More!



QiuXia Chen
POINSETTIA
Product Manager

CONTACT INFO

Phone | (614) 301-2869

Email | Q.Chen@DummenOrange.com

Hi, I'm QiuXia Chen, your North American Poinsettia Product Manager!

I am happy to introduce our NEW 2025 Poinsettia catalog! This catalog is our program for all season, novelty and specialty poinsettias, plus Euphorbia!

Our updated, all-encompassing catalog is available online; scan the QR code below to take you directly to our complete catalog of Poinsettias.

Happy growing!



SCAN TO VIEW
Complete Catalog

Table of Contents

POINSETTIAS



02	NEW Varieties
2	Freya Family NEW
3	Noblesse NEW
3	Rapid Red NEW
04	Fall Favorites
06	Early Season
07	Premium Family
09	Freedom Family
10	Ferrara
10	Prestige Early Red
11	Winter Rose Early Red
12	Mid Season
14	Candy Cane
3,14	Red Ribbons
15	Prestigious
15	Prestige Red
16	Enduring Family
17	Jubilee Family
18	Viking Family
18	FabYULEous
19	Atla
19	Red Soul
20	Runway Red
20	Viking Pro
21	Imperial
21	Flurry
22	Frozen
22	Polar Bear
23	Tidings
23	Early Polly's Pink
24	Ice Punch
26	Late Season
3, 28	Red Jewel
28	Red Glitter
29	Grande Italia
29	Classic Family
30	Tapestry
30	Winter Rose Dark Red

31	Southern Belle
32	Novelty
5, 34	Green Envy
4, 34	Autumn Leaves
4, 35	Golden Glo
5, 35	Norwin Orange
37	Specialty
38	Minis
39	Combinations
40	Cut Flowers
42	Euphorbia Hybrids
44	J'Adore Family
45	Luv U Pink
46	Product Information + Index

KEY

NEW New Variety

TOP SELLER Top Seller

PRODUCTION FARM

ELS El Salvador

ETH Ethiopia*

*Select varieties and Mini cuttings



NEW FOR 2025!

Freya Marble	11126	Noblesse	11068
Freya Pink	11057	Rapid Red	11121
Freya Red	11421	Red Ribbons	11065
Freya White	11058	Red Jewel	11072

Poinsettia | NEW Varieties



Our new Poinsettia varieties consist of stunning singles Rapid Red and Noblesse, plus Freya, a brand new series, consisting of Marble, Pink, Red and White! Red Jewel and Red Ribbons were new in 2024 and they have proven to be a crowd favorite.



Freya Marble
11126 | 7.5 weeks



Freya Pink
11057 | 7.5 weeks



Freya Red
11421 | 7.5 weeks



Freya White
11058 | 7.5 weeks



NEW

Noblesse
11068 | 8 weeks



NEW

Rapid Red
11121 | 6 weeks



Red Jewel
11072 | 8.5 weeks



Red Ribbons
11065 | 8 weeks

Poinsettia | NEW Varieties

Status	Variety Name	Variety Code	Production Farm	Natural Response Time	Timing	Vigor	Bract Color	4"	6"	8"	10"	Tree
NEW	Freya Marble	11126	ELS	7.5 weeks	Early	Medium	Marble	✓	✓	✓		
NEW	Freya Pink	11057	ELS	7.5 weeks	Early	Medium	Pink	✓	✓	✓		
NEW	Freya Red	11421	ELS	7.5 weeks	Early	Medium	Red	✓	✓	✓		
NEW	Freya White	11058	ELS	7.5 weeks	Early	Medium	White	✓	✓	✓		
NEW	Noblesse	11068	ELS	8 weeks	Mid	Medium	Red	✓	✓	✓	✓	✓
NEW	Rapid Red	11121	ELS	6 weeks	Very Early	Medium-Vigorous	Red	✓	✓	✓	✓	✓
	Red Jewel	11072	ELS	8.5 weeks	Late	Medium	Red	✓	✓	✓		
	Red Ribbons	11065	ELS	8 weeks	Mid	Medium	Red	✓	✓	✓		



TOP
SELLER

Autumn Leaves
11391 | 8 weeks



TOP
SELLER

Golden Glo
11431 | 8 weeks



FALL FAVORITES

Our diverse novelty poinsettia breeding offers beautiful autumnal tones that go beyond traditional reds. Natural early timing allows growers to easily offer an early assortment at retail; no black cloth is required to achieve pre-Thanksgiving sales! These early performers with warm autumn hues are the perfect way to earn holiday sales faster. Autumn Leaves has become a consumer staple for Thanksgiving tablescapes and will transition beautifully into your Christmas decor. Paired with the brilliant Norwin Orange, illuminating Golden Glo and the unique Green Envy, this becomes the perfect collection for stylish autumn merchandising.

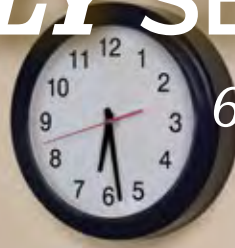


Norwin Orange
11081 | 8 weeks

Green Envy
11433 | 7.5 weeks

EARLY SEASON

6-7.5 weeks





The Premium Family has been a legacy program for greenhouse growers around the world. This exceptional collection has the traditional reds and white, but also many unique standouts like Ice Crystal and Picasso. Premium varieties finish early with lower vigor for small- to mid-sized containers and early season sales.



Premium Early Red
10241 | 6 weeks



Premium Ice Crystal
10244 | 75 weeks



Premium Lipstick Pink
10235 | 75 weeks



Premium Marble
10249 | 7 weeks



Premium Picasso
10234 | 7.5 weeks



TOP
SELLER

Premium Polar
10243 | 7.5 weeks



TOP
SELLER

Premium Red
10230 | 7 weeks



Premium White
10233 | 7 weeks

Poinsettia Early Season | Premium Family

Status	Variety Name	Variety Code	Production Farm	Natural Response Time	Timing	Vigor	Bract Color	4"	6"	8"	10"	Tree
	Premium Early Red	10241	ELS	6 weeks	Very Early	Compact	Red	✓	✓	✓	✓	
TOP	Premium Ice Crystal	10244	ELS	7.5 weeks	Early	Compact	Red White	✓	✓	✓	✓	
	Premium Lipstick Pink	10235	ELS	7.5 weeks	Early	Medium-compact	Pink	✓	✓	✓	✓	
	Premium Marble	10249	ELS	7 weeks	Early	Medium-compact	Marble	✓	✓	✓	✓	
	Premium Picasso	10234	ELS	7.5 weeks	Early	Compact	Cream Pink	✓	✓	✓	✓	
TOP	Premium Polar	10243	ELS	7.5 weeks	Early	Compact	White	✓	✓	✓	✓	
TOP	Premium Red	10230	ELS	7 weeks	Early	Medium-compact	Red	✓	✓	✓	✓	
	Premium White	10233	ELS	7 weeks	Early	Medium-compact	White	✓	✓	✓	✓	



More vigorous than the Premium lineup, Freedom varieties are suitable for medium to large containers, which they fill well with large bracts and strong branching. Four colors are available that play well together in combinations.



Freedom Early Red
11191 | 7 weeks



Freedom Red
11020 | 7.5 weeks



Freedom White
11022 | 7.5 weeks



Freedom Pink
11024 | 8 weeks

Poinsettia Early Season | Freedom Family

Status	Variety Name	Variety Code	Production Farm	Natural Response Time	Timing	Vigor	Bract Color	4"	6"	8"	10"	Tree
	Freedom Early Red	11191	ELS	7 weeks	Early	Medium	Red	✓	✓	✓	✓	✓
	Freedom Pink	11024	ELS	8 weeks	Early	Medium	Pink	✓	✓	✓	✓	
	Freedom Red	11020	ELS	7.5 weeks	Early	Medium	Red	✓	✓	✓	✓	✓
	Freedom White	11022	ELS	7.5 weeks	Early	Medium	White	✓	✓	✓	✓	✓

Poinsettia Early Season | Ferrara



Ferrara
10897 | 7.5 weeks

Strong vigor and a fast response time make this standout a top pick for the grower. This reliable variety offers excellent branching and a V-shaped habit making it ideal for production and sleeving. It is a newer stand-alone selection that boasts beautiful, deep-red bracts and is perfect as an upscale decoration.

Poinsettia Early Season | Ferrara

Status	Variety Name	Variety Code	Production Farm	Natural Response Time	Timing	Vigor	Bract Color	4"	6"	8"	10"	Tree
TOP	Ferrara	10897	ELS	7.5 weeks	Early	Medium-vigorous	Bright Red	✓	✓	✓	✓	✓

Poinsettia Early Season | Prestige Early Red



Prestige Early Red
11151 | 7.5 weeks

Prestige Early Red has predictable growth throughout the season.

Poinsettia Early Season | Prestige Early Red

Status	Variety Name	Variety Code	Production Farm	Natural Response Time	Timing	Vigor	Bract Color	4"	6"	8"	10"	Tree
	Prestige Early Red	11151	ELS	7.5 weeks	Early	Medium	Red	✓	✓	✓	✓	✓

Poinsettia Early Season | Winter Rose Early Red



Winter Rose Early Red
10993 | 7.5 weeks

An early-season specialty variety, Winter Rose Early Red has ruffled bracts which resemble roses. The narrow plant habit is great for straight-ups and combination plantings for a unique holiday look.

Poinsettia Early Season | Winter Rose Early Red

Status	Variety Name	Variety Code	Production Farm	Natural Response Time	Timing	Vigor	Bract Color	4"	6"	8"	10"	Tree
TOP	Winter Rose Early Red	10993	ELS	7.5 weeks	Early	Compact	Red	✓	✓	✓		

Poinsettia Early Season | 6-7.5 weeks

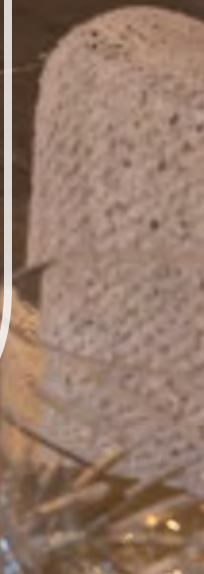
Poinsettia Early Season | 6-7.5 weeks

Status	Variety Name	Variety Code	Production Farm	Natural Response Time	Timing	Vigor	Bract Color	4"	6"	8"	10"	Tree
TOP	Ferrara	10897	ELS	7.5 weeks	Early	Medium-vigorous	Bright Red	✓	✓	✓	✓	✓
	Freedom Early Red	11191	ELS	7 weeks	Early	Medium	Red	✓	✓	✓	✓	
	Freedom Pink	11024	ELS	8 weeks	Early	Medium	Pink	✓	✓	✓	✓	
	Freedom Red	11020	ELS	7.5 weeks	Early	Medium	Red	✓	✓	✓	✓	
	Freedom White	11022	ELS	7.5 weeks	Early	Medium	White	✓	✓	✓	✓	✓
	Green Envy	11433	ELS	7.5 weeks	Early	Medium-compact	Green	✓	✓	✓		
	Premium Early Red	10241	ELS	6 weeks	Early	Compact	Red	✓	✓	✓	✓	
TOP	Premium Ice Crystal	10244	ELS	7.5 weeks	Early	Compact	Red White	✓	✓	✓	✓	
	Premium Lipstick Pink	10235	ELS	7.5 weeks	Early	Medium-compact	Pink	✓	✓	✓	✓	
	Premium Marble	10249	ELS	7 weeks	Early	Medium-compact	Marble	✓	✓	✓	✓	
	Premium Picasso	10234	ELS	7.5 weeks	Early	Compact	Cream Pink	✓	✓	✓	✓	
TOP	Premium Polar	10243	ELS	7.5 weeks	Early	Compact	White	✓	✓	✓	✓	
TOP	Premium Red	10230	ELS	7 weeks	Early	Medium-compact	Red	✓	✓	✓	✓	
	Premium White	10233	ELS	7 weeks	Early	Medium-compact	White	✓	✓	✓	✓	
	Prestige Early Red	11151	ELS	7.5 weeks	Early	Medium	Red	✓	✓	✓	✓	✓
TOP	Winter Rose Early Red	10993	ELS	7.5 weeks	Early	Compact	Red	✓	✓	✓		



MID SEASON

8 weeks



Poinsettia Mid Season | Candy Cane



Candy Cane
10153 | 8 weeks

This truly special selection presents red bracts embellished with fun, white speckles, providing a striking contrast against dark-green foliage. The classic star-shaped bracts are large and showy and create an impressive display at retail. Strong stems and a strong root system make this poinsettia an excellent choice for a range of container sizes, from miniature up to 10-inch.

Poinsettia Mid Season | Candy Cane

Status	Variety Name	Variety Code	Production Farm	Natural Response Time	Timing	Vigor	Bract Color	4"	6"	8"	10"	Tree
	Candy Cane	10153	ELS	8 weeks	Mid	Medium	Red White	✓	✓	✓		

Poinsettia Mid Season | Red Ribbons



Red Ribbons
11065 | 8 weeks

Introducing Red Ribbons, a true innovation with uniquely shaped bracts and leaves. Red Ribbons is easy to grow with a low to medium vigor and its free branching allows the florist-type quality. With its uniquely shaped oak leaf bracts in bold red color and abundant cyathia, it will be the perfect plant to use with foliage combinations or as a novelty standalone.

Poinsettia Mid Season | Red Ribbons

Status	Variety Name	Variety Code	Production Farm	Natural Response Time	Timing	Vigor	Bract Color	4"	6"	8"	10"	Tree
	Red Ribbons	11065	ELS	8 weeks	Mid	Medium	Red	✓	✓	✓		

Poinsettia Mid Season | Prestigious



Prestigious
10120 | 8 weeks

One of our most exceptional varieties with mid-vigor and mid-season performance. The plant is extremely tough, handling dropping, sleeving, and shipping with ease. Consumers will love Prestigious with the dark-red textured bracts on a classic green foliage.

Poinsettia Mid Season | Prestigious

Status	Variety Name	Variety Code	Production Farm	Natural Response Time	Timing	Vigor	Bract Color	4"	6"	8"	10"	Tree
TOP	Prestigious	10120	ELS	8 weeks	Mid	Medium	Red	✓	✓	✓	✓	✓

Poinsettia Mid Season | Prestige Red



Prestige Red
11150 | 8 weeks

This mid-season variety stands out at retail with reliable and long-lasting shelf life. Prestige is versatile in use and adaptable to any container size.

Poinsettia Mid-Late Season | Prestige

Status	Variety Name	Variety Code	Production Farm	Natural Response Time	Timing	Vigor	Bract Color	4"	6"	8"	10"	Tree
TOP	Prestige Red	11150	ELS	8 weeks	Mid	Medium	Red	✓	✓	✓	✓	✓



The Enduring family fills the mid-season holiday call with their attractive oak leaf-shaped bract in red, white, pink and marble. Enduring colors are tried and true in all regions and work well mixed in duo or tri-color pots.



Enduring Red
11010 | 8 weeks



Enduring White
11013 | 8 weeks



Enduring Pink
11015 | 8 weeks



Enduring Marble
11019 | 8 weeks

Poinsettia Mid Season | Enduring Family

Status	Variety Name	Variety Code	Production Farm	Natural Response Time	Timing	Vigor	Bract Color	4"	6"	8"	10"	Tree
	Enduring Marble	11019	ELS	8 weeks	Mid	Medium-compact	Marble	✓	✓	✓	✓	
	Enduring Pink	11015	ELS	8 weeks	Mid	Medium-compact	Pink	✓	✓	✓	✓	
	Enduring Red	11010	ELS	8 weeks	Mid	Medium-compact	Red	✓	✓	✓	✓	
	Enduring White	11013	ELS	8 weeks	Mid	Medium-compact	White	✓	✓	✓	✓	



The mid-season Jubilee family is available in Red, White, Pink and the novel Jingle Bells – a striking red and pink bicolored variety – and is a vigorous family with a classic bract and leaf shape. Jubilee fills larger containers well and is an outstanding performer in both hot and cold climates.



Jubilee Red
11030 | 8 weeks



Jubilee White
11033 | 8 weeks



Jubilee Pink
11035 | 8 weeks



Jubilee Jingle Bells
11036 | 8 weeks

Poinsettia Mid Season | Jubilee Family

Status	Variety Name	Variety Code	Production Farm	Natural Response Time	Timing	Vigor	Bract Color	4"	6"	8"	10"	Tree
	Jubilee Jingle Bells	11036	ELS	8 weeks	Mid	Medium	Red White	✓	✓	✓	✓	✓
	Jubilee Pink	11035	ELS	8 weeks	Mid	Medium	Pink	✓	✓	✓	✓	✓
	Jubilee Red	11030	ELS	8 weeks	Mid	Medium	Red	✓	✓	✓	✓	✓
	Jubilee White	11033	ELS	8 weeks	Mid	Medium	White	✓	✓	✓	✓	✓

Poinsettia Mid Season | Viking Family



Viking Cinnamon
10657 | 8 weeks

Viking Red
10650 | 8 weeks

This mid-season collection is both heat tolerant and well-suited for cold finishing. Red and the unique Cinnamon display a V-shaped architecture that is perfect for high-density production.

Poinsettia Mid Season | Viking

Status	Variety Name	Variety Code	Production Farm	Natural Response Time	Timing	Vigor	Bract Color	4"	6"	8"	10"	Tree
TOP	Viking Cinnamon	10657	ELS	8 weeks	Mid	Medium	Pink Orange	✓	✓	✓	✓	✓
	Viking Red	10650	ELS	8 weeks	Mid	Medium	Red	✓	✓	✓	✓	✓

Poinsettia Mid Season | FabYULEous



FabYULEous
10104 | 8 weeks

We believe the name speaks for itself, as this variety is nearly perfect for any situation. FabYULEous has an elegant dark-red bract color for a warm Christmas mood. The plants have a moderate habit that requires very little growth regulators.

Poinsettia Mid Season | FabYULEous

Status	Variety Name	Variety Code	Production Farm	Natural Response Time	Timing	Vigor	Bract Color	4"	6"	8"	10"	Tree
TOP	FabYULEous	10104	ELS	8 weeks	Mid	Medium	Red	✓	✓	✓	✓	

Poinsettia Mid Season | Atla



Atla
11423 | 8 weeks

This strong, bright-red mid-season performer is a perfect pick for mass production. Atla has a strong V-shaped habit, perfect for high-density production, and the medium-sized bracts make sleeving and shipping a breeze.

Poinsettia Mid Season | Atla

Status	Variety Name	Variety Code	Production Farm	Natural Response Time	Timing	Vigor	Bract Color	4"	6"	8"	10"	Tree
	Atla	11423	ELS	8 weeks	Mid	Medium	Red	✓	✓	✓		

Poinsettia Mid Season | Red Soul



Red Soul
11323 | 8 weeks

This gorgeous mid-season variety's deep velvet-red bracts are striking against intense, dark-green foliage. A standout in all climates, especially the South, Red Soul exhibits excellent heat tolerance on a medium-vigor plant.

Poinsettia Mid Season | Red Soul

Status	Variety Name	Variety Code	Production Farm	Natural Response Time	Timing	Vigor	Bract Color	4"	6"	8"	10"	Tree
TOP	Red Soul	11323	ELS	8 weeks	Mid	Medium-compact	Red	✓	✓	✓		

Poinsettia Mid Season | Runway Red



Runway Red
10101 | 8 week

Runway Red will grab attention with the large, vivid red bracts and boldly presented cyathia. This industrial strength variety has strong vigor and a broad and spacious habit for bold presentations, while also having the durability to go the distance throughout the season.

Poinsettia Mid Season | Runway Red

Status	Variety Name	Variety Code	Production Farm	Natural Response Time	Timing	Vigor	Bract Color	4"	6"	8"	10"	Tree
	Runway Red	10101	ELS	8 weeks	Mid	Medium	Red	✓	✓	✓	✓	

Poinsettia Mid Season | Viking Pro



Viking Pro
10144 | 8 weeks

Offering a similar bract shape and color to the favorite Viking Red, Viking Pro exhibits a more compact stature in comparison. Attractive bracts contrast beautifully against the vivid yellow cyathia and dark green foliage.

Poinsettia Mid Season | Viking Pro

Status	Variety Name	Variety Code	Production Farm	Natural Response Time	Timing	Vigor	Bract Color	4"	6"	8"	10"	Tree
	Viking Pro	10144	ELS	8 weeks	Mid	Medium	Red	✓	✓	✓	✓	

Poinsettia Mid Season | Imperial



Imperial
10143 | 8 weeks

Imperial is the perfect plant for late November and early December sales. Imperial stands out with its sturdy plant structure and vibrant red large showy bracts; it adds pronounced color to any holiday presentation.

Poinsettia Mid Season | Imperial

Status	Variety Name	Variety Code	Production Farm	Natural Response Time	Timing	Vigor	Bract Color	4"	6"	8"	10"	Tree
TOP	Imperial	10143	ELS	8 weeks	Mid	Medium-vigorous	Red		✓	✓	✓	

Poinsettia Mid Season | Flurry



Flurry
11051 | 8 weeks

Flurry is hitting the scene as our brightest white yet. With a traditional bract presentation and dark green foliage, it will become the staple white in your program. Flurry is a robust plant from roots to shoots for production ease with controllable vigor suitable for various container sizes. Flurry is an outstanding choice for painted programs with large, flat bracts.

Poinsettia Mid Season | Flurry

Status	Variety Name	Variety Code	Production Farm	Natural Response Time	Timing	Vigor	Bract Color	4"	6"	8"	10"	Tree
	Flurry	11051	ELS	8 weeks	Mid	Medium-vigorous	White	✓	✓	✓	✓	

Poinsettia Mid Season | Frozen



One of the cleanest and purest white poinsettias available, consumers will appreciate how the bracts simply light up against the dark foliage.

Frozen
11056 | 8 weeks

Poinsettia Mid Season | Frozen

Status	Variety Name	Variety Code	Production Farm	Natural Response Time	Timing	Vigor	Bract Color	4"	6"	8"	10"	Tree
TOP	Frozen	11056	ELS	8 weeks	Mid	Medium-vigorous	White	✓	✓	✓	✓	

Poinsettia Mid Season | Polar Bear



Excellent, bright-white bracts over variegated transitional bracts for a unique look.

Polar Bear
11208 | 8 weeks

Poinsettia Mid Season | Polar Bear

Status	Variety Name	Variety Code	Production Farm	Natural Response Time	Timing	Vigor	Bract Color	4"	6"	8"	10"	Tree
	Polar Bear	11208	ELS	8 weeks	Mid	Medium	White	✓	✓	✓	✓	

Poinsettia Mid Season | Tidings



Tidings Dark Pink
11049 | 8 weeks

Tidings is an elegant addition to the modern-day Christmas décor. Tidings Dark Pink have a dense, medium habit with large, florist-quality bracts finishing with a sophisticated quality.

Poinsettia Mid Season | Tidings

Status	Variety Name	Variety Code	Production Farm	Natural Response Time	Timing	Vigor	Bract Color	4"	6"	8"	10"	Tree
	Tidings Dark Pink	11049	ELS	8 weeks		Medium	Pink Dark Pink	✓	✓	✓	✓	

Poinsettia Mid Season | Early Polly's Pink



Early Polly's Pink
11055 | 8 weeks

The brightest pink bracts available in a poinsettia. Early Polly's Pink displays an extremely vibrant color at retail and the vigorous plants are great for larger containers and premium presentations.

Poinsettia Mid Season | Early Polly's Pink

Status	Variety Name	Variety Code	Production Farm	Natural Response Time	Timing	Vigor	Bract Color	4"	6"	8"	10"	Tree
	Early Polly's Pink	11055	ELS	8 weeks	Mid Mid	Vigorous	Pink		✓	✓	✓	



Ice Punch has a truly novel bicolor effect with deep cranberry-red bracts, frosted over with an icy white center.



Ice Punch
11216 | 8 weeks

Poinsettia Mid Season | Ice Punch

Status	Variety Name	Variety Code	Production Farm	Natural Response Time	Timing	Vigor	Bract Color	4"	6"	8"	10"	Tree
	Ice Punch	11216	ELS	8 weeks	Mid	Medium	Red White	✓	✓	✓	✓	✓



Poinsettia Mid Season | 8 weeks

Status	Variety Name	Variety Code	Production Farm	Natural Response Time	Timing	Vigor	Bract Color	4"	6"	8"	10"	Tree
	Atla	11423	ELS	8 weeks	Mid	Medium	Red	✓	✓	✓		
TOP	Autumn Leaves	11391	ELS	8 weeks	Mid	Compact	Golden Peach	✓	✓	✓		
	Candy Cane	10153	ELS	8 weeks	Mid	Medium	Red White	✓	✓	✓		
	Early Polly's Pink	11055	ELS	8 weeks	Mid	Vigorous	Pink		✓	✓	✓	
	Enduring Marble	11019	ELS	8 weeks	Mid	Medium-compact	Marble	✓	✓	✓	✓	
	Enduring Pink	11015	ELS	8 weeks	Mid	Medium-compact	Pink	✓	✓	✓	✓	
	Enduring Red	11010	ELS	8 weeks	Mid	Medium-compact	Red	✓	✓	✓	✓	
	Enduring White	11013	ELS	8 weeks	Mid	Medium-compact	White	✓	✓	✓	✓	
TOP	FabYULEous	10104	ELS	8 weeks	Mid	Medium	Red	✓	✓	✓	✓	
	Flurry	11051	ELS	8 weeks	Mid	Medium-vigorous	White	✓	✓	✓	✓	
TOP	Frozen	11056	ELS	8 weeks	Mid	Medium-vigorous	White	✓	✓	✓	✓	
	Golden Glo	11431	ELS	8 weeks	Mid	Compact	Yellow	✓	✓			
	Ice Punch	11216	ELS	8 weeks	Mid	Medium	Red White	✓	✓	✓	✓	✓
TOP	Imperial	10143	ELS	8 weeks	Mid	Medium-vigorous	Red		✓	✓	✓	
	Jubilee Jingle Bells	11036	ELS	8 weeks	Mid	Medium	Red White	✓	✓	✓	✓	✓
	Jubilee Pink	11035	ELS	8 weeks	Mid	Medium	Pink	✓	✓	✓	✓	✓
	Jubilee Red	11030	ELS	8 weeks	Mid	Medium	Red	✓	✓	✓	✓	✓
	Jubilee White	11033	ELS	8 weeks	Mid	Medium	White	✓	✓	✓	✓	✓
	Norwin Orange	11081	ELS	8 weeks	Mid	Medium	Orange					
	Polar Bear	11208	ELS	8 weeks	Mid	Medium	White	✓	✓	✓	✓	
	Prestige Maroon	11156	ELS	8 weeks	Mid	Medium	Maroon	✓	✓	✓	✓	✓
TOP	Prestige Red	11150	ELS	8 weeks	Mid	Medium	Red	✓	✓	✓	✓	✓
TOP	Prestigious	10120	ELS	8 weeks	Mid	Medium	Red	✓	✓	✓	✓	✓
TOP	Red Soul	11323	ELS	8 weeks	Mid	Medium-compact	Red	✓	✓	✓		
	Runway Red	10101	ELS	8 weeks	Mid	Medium	Red	✓	✓	✓	✓	
	Tidings Dark Pink	11049	ELS	8 weeks	Mid	Medium	Pink Dark Pink	✓	✓	✓	✓	
TOP	Viking Cinnamon	10657	ELS	8 weeks	Mid	Medium	Pink Orange	✓	✓	✓	✓	✓
	Viking Pro	10144	ELS	8 weeks	Mid	Medium	Red	✓	✓	✓	✓	
	Viking Red	10650	ELS	8 weeks	Mid	Medium	Red	✓	✓	✓	✓	✓



LATE SEASON

8.5 weeks



Poinsettia Late Season | Red Jewel



Red Jewel
11072 | 8.5 weeks

Red Jewel will be the new showstopper for mid-to-late-season sales with its full body yet controllable growth. The saturated dark red bracts look elegant over the dark green foliage, creating an elegant and upscale looking Poinsettia.

Poinsettia Late Season | Red Jewel

Status	Variety Name	Variety Code	Production Farm	Natural Response Time	Timing	Vigor	Bract Color	4"	6"	8"	10"	Tree
	Red Jewel	11072	ELS	8.5 weeks	Late	Medium-compact	Red	✓	✓	✓		

Poinsettia Late Season | Red Glitter



Red Glitter
11317 | 8.5 weeks

Striking colors with horizontal bracts. Heat-tolerant and ideal for tree forms with superior post-production characteristics.

Poinsettia Late Season | Red Glitter

Status	Variety Name	Variety Code	Production Farm	Natural Response Time	Timing	Vigor	Bract Color	4"	6"	8"	10"	Tree
TOP	Red Glitter	11317	ELS	8.5 weeks	Late	Medium	Red White	✓	✓	✓	✓	✓

Poinsettia Late Season | Grande Italia



Grande Italia
10330 | 8.5 weeks

Make a statement with this showstopping red variety, perfect for late-season quality sales. This high-vigor poinsettia fills out larger containers nicely with large and dramatic, deep red bracts. Cyathia are slow to open, providing the longest-lasting quality throughout the season.

Poinsettia Late Season | Grande Italia

Status	Variety Name	Variety Code	Production Farm	Natural Response Time	Timing	Vigor	Bract Color	4"	6"	8"	10"	Tree
TOP	Grande Italia	10330	ELS	8.5 weeks	Late	Medium-vigorous	Dark Red		✓	✓	✓	✓

Poinsettia Late Season | Classic Family



Classic Red
11180 | 8.5 weeks

Classic White
11183 | 8.5 weeks

Excellent, vigorous series for straight-up color combinations and large container production.

Poinsettia Late Season | Classic

Status	Variety Name	Variety Code	Production Farm	Natural Response Time	Timing	Vigor	Bract Color	4"	6"	8"	10"	Tree
	Classic Red	11180	ELS	8.5 weeks	Late	Vigorous	Red		✓	✓	✓	✓
	Classic White	11183	ELS	8.5 weeks	Late	Vigorous	White		✓	✓	✓	✓

Poinsettia Late Season | Tapestry



Tapestry
11107 | 8.5 weeks

Tapestry makes an elegant statement with green foliage highlighted with a luxe gold margin. Excellent for combination plantings or as a standalone decorative accent among traditional red varieties.

Poinsettia Late Season | Tapestry

Status	Variety Name	Variety Code	Production Farm	Natural Response Time	Timing	Vigor	Bract Color	4"	6"	8"	10"	Tree
	Tapestry	11107	ELS	8.5 weeks	Late	Compact	Red	✓	✓	✓		

Poinsettia Late Season | Winter Rose Dark Red



Winter Rose Dark Red
11162 | 8.5 weeks

The ruffled bracts resemble roses for a unique holiday look. The narrow plant habit is great for straight-ups and combination plantings. And originally bred from cutflower production varieties, Winter Rose Dark Red has phenomenal vase life and makes unique Christmas bouquets.

Poinsettia Late Season | Winter Rose Dark Red

Status	Variety Name	Variety Code	Production Farm	Natural Response Time	Timing	Vigor	Bract Color	4"	6"	8"	10"	Tree
	Winter Rose Dark Red	11162	ELS	8.5 weeks	Late	Medium-compact	Dark Red	✓	✓	✓		✓

Poinsettia Late Season | Southern Belle



Southern Belle
10908 | 8.5 weeks

Southern Belle is a beautiful florist-type poinsettia for December sales. It is a medium vigor plant with bright red bract and a strong v-shaped structure.

Poinsettia Late Season | Southern Belle

Status	Variety Name	Variety Code	Production Farm	Natural Response Time	Timing	Vigor	Bract Color	4"	6"	8"	10"	Tree
TOP	Southern Belle	10908	ELS	8.5 weeks	Late	Medium-compact	Red		✓	✓	✓	✓

Poinsettia Late Season | 8.5 weeks



Poinsettia Late Season | 8.5 weeks

Status	Variety Name	Variety Code	Production Farm	Natural Response Time	Timing	Vigor	Bract Color	4"	6"	8"	10"	Tree
	Classic Red	11180	ELS	8.5 weeks	Late	Vigorous	Red		✓	✓	✓	✓
	Classic White	11183	ELS	8.5 weeks	Late	Vigorous	White		✓	✓	✓	✓
TOP	Grande Italia	10330	ELS	8.5 weeks	Late	Medium-vigorous	Dark Red		✓	✓	✓	✓
TOP	Red Glitter	11317	ELS	8.5 weeks	Late	Medium	Red White	✓	✓	✓	✓	✓
TOP	Southern Belle	10908	ELS	8.5 weeks	Late	Medium-compact	Red		✓	✓	✓	✓
	Tapestry	11107	ELS	8.5 weeks	Late	Compact	Red	✓	✓	✓		
	Winter Rose Dark Red	11162	ELS	8.5 weeks	Late	Medium-compact	Dark Red	✓	✓	✓		✓



NOVELTY



Poinsettia Novelty | Green Envy



Green Envy
11433 | 7.5 weeks

Green Envy will keep spirits bright. The large, bright chartreuse bracts have outstanding contrast against the dark green foliage and make a bold holiday statement mixed both in our Fall Favorites, as well as with classic reds during the Christmas season.

Poinsettia Novelty Early Season | Green Envy

Status	Variety Name	Variety Code	Production Farm	Natural Response Time	Timing	Vigor	Bract Color	4"	6"	8"	10"	Tree
	Green Envy	11433	ELS	7.5 weeks	Early	Medium-compact	Green	✓	✓	✓		

Poinsettia Novelty | Autumn Leaves



Autumn Leaves
11391 | 8 weeks

Warm golden-peach tones are ideal for Autumn sales.

Poinsettia Novelty Mid Season | Autumn Leaves

Status	Variety Name	Variety Code	Production Farm	Natural Response Time	Timing	Vigor	Bract Color	4"	6"	8"	10"	Tree
TOP	Autumn Leaves	11391	ELS	8 weeks	Mid	Compact	Golden Peach	✓	✓	✓		

Poinsettia Novelty | Golden Glo



Golden Glo
11431 | 8 weeks

The unique golden color of Golden Glo intensifies as the bract matures – a striking choice for red and gold holiday pairings.

Poinsettia Novelty Mid Season | Golden Glo

Status	Variety Name	Variety Code	Production Farm	Natural Response Time	Timing	Vigor	Bract Color	4"	6"	8"	10"	Tree
TOP	Golden Glo	11431	ELS	8 weeks	Mid	Compact	Yellow	✓	✓			

Poinsettia Novelty | Norwin Orange



Norwin Orange
11081 | 8 weeks

Norwin Orange is a true breakthrough for this novel color. By far the brightest orange available on the market today. This mid-vigor variety has immense bracts in a vivid color perfect for Halloween and Thanksgiving promotions. Named after a long-time partner of the Ecke program, Norwin Heimos, this variety will also be a legacy in poinsettia programs for years to come.

Poinsettia Novelty Mid Season | Norwin Orange

Status	Variety Name	Variety Code	Production Farm	Natural Response Time	Timing	Vigor	Bract Color	4"	6"	8"	10"	Tree
	Norwin Orange	11081	ELS	8 weeks	Mid	Medium	Orange	✓	✓	✓	✓	



Poinsettia Novelty | 7.5-8 weeks

Status	Variety Name	Variety Code	Production Farm	Natural Response Time	Timing	Vigor	Bract Color	4"	6"	8"	10"	Tree
TOP	Autumn Leaves	11391	ELS	8 weeks	Mid	Compact	Golden Peach	✓	✓	✓		
	Green Envy	11433	ELS	7.5 weeks	Early	Medium-compact	Green	✓	✓	✓		
TOP	Golden Glo	11431	ELS	8 weeks	Mid	Compact	Yellow	✓	✓			
	Norwin Orange	11081	ELS	8 weeks	Mid	Medium	Orange	✓	✓	✓	✓	

SPECIALTY





The mini poinsettias provide a high-density, short production cycle option. Dümme Orange offers a URC cutting specifically produced with mini production in mind. These varieties have a smaller bract size, natural compactness, and excellent shelf life, making them an easy choice for mini production.



Poinsettia Specialty | Minis

Status	Variety Name	Variety Code	Production Farm	Natural Response Time	Timing	Vigor	Bract Color	4"	6"	8"	10"	Tree
	Candy Cane	10153	ELS	8 weeks	Mid	Medium	Red White	✓	✓	✓		
TOP	Premium Red	10230	ELS	7 weeks	Early	Medium-compact	Red	✓	✓	✓	✓	
	Premium White	10233	ELS	7 weeks	Early	Medium-compact	White	✓	✓	✓	✓	
TOP	Red Soul	11323	ELS	8 weeks	Mid	Medium-compact	Red	✓	✓	✓		
TOP	Winter Rose Early Red	10993	ELS	75 weeks	Early	Compact	Red	✓	✓	✓		



Poinsettia combinations offer value-added programs to the market for retailers and consumers. We've curated the best collection of duos and trios with varieties that are genetically matched for timing, growth habit and production needs. This allows growers to easily program finished crops as mixed containers, or as a rack program using these perfectly matched varieties for ultimate programmability.



Poinsettia Specialty | Duo Combinations

Classic Holiday Duos	Code	Natural Response Time	Vigor	8"	10"
Enduring Red Enduring White	11010 11013	8 weeks	Medium-compact	✓	✓
Enduring Pink Enduring White	11015 11013	8 weeks	Medium-compact	✓	✓
Enduring Marble Enduring Pink	11019 11015	8 weeks	Medium-compact	✓	✓
Jubilee Red Jubilee White	11030 11033	8 weeks	Medium	✓	✓
Jubilee Jingle Bells Jubilee White	11036 11033	8 weeks	Medium	✓	✓
Classic Red Classic White	11180 11183	8.5 weeks	Vigorous	✓	✓

Premium Duos	Code	Natural Response Time	Vigor	8"	10"
Early Polly's Pink Green Envy	11055 11433	8 weeks	Medium	✓	✓

Autumn Duos	Code	Natural Response Time	Vigor	8"	10"
Autumn Leaves Golden Glo	11391 11431	8 weeks	Compact	✓	



Poinsettia Specialty | Trio Combinations

Red and White and Pink	Code	Natural Response Time	Vigor	8"	10"
Enduring Red Enduring White Enduring Pink	11010 11013 11015	8 weeks	Medium-compact	✓	✓
Jubilee Red Jubilee White Jubilee Pink	11030 11033 11035	8 weeks	Medium	✓	✓
Jubilee Jingle Bells Jubilee Red Jubilee White	11036 11030 11033	8 weeks	Medium	✓	✓



Recent breeding has produced a poinsettia with a much longer post-harvest life and more desirable cut flower characteristics such as longer, sturdier stems and larger flower heads. Easily grown as cut flowers, poinsettias are perfect for Christmas and other holidays such as Valentine's Day. Cut poinsettias are a festive addition to a holiday table or celebration, and the unique colors and flower form are ideal for high-end bouquets.

Winter Rose is an elegant choice as a cut flower in traditional red. Novelty colors like Autumn Leaves, Golden Glo, Green Envy, and Norwin Orange are ideally suited for the autumnal colors of a Thanksgiving table. Varieties like Early Polly's Pink in lovely bright pink make an exciting option for Valentine's Day.

Holiday Schedule

July 5 th	Plant rooted cuttings 2 per 8-inch container
July 19 th	Pinch to 4 nodes per plant when plants are fully rooted
August 16 th	When stems are large enough thin 2 to 3 per plant
September 6 th	Space plants 12 in x 12 in (30 cm x 30 cm)
September 22 nd -26 th	Flower Initiation
December 1 st -5 th	Cut flowers ready for harvest





EUPHORBIA **HYBRIDS**





J'Adore is a series of interspecific euphorbia hybrids for dynamic, modern-day holiday décor. These varieties give your program a touch of luxe with layers of velvety bracts in pastel pink and rich touchable textures. The versatility of J'Adore varieties allows us to lean on these performers from the early season, all the way through New Year's promotions, for an elegant and glamorous program.



J'Adore Dark Pink
10154 | 7.5 weeks



J'Adore Pink
10381 | 7.5 weeks



J'Adore Soft Pink
10156 | 7.5 weeks



J'Adore White Pearl
10155 | 7.5 weeks

Euphorbia Hybrid | J'Adore

Status	Variety Name	Variety Code	Production Farm	Natural Response Time	Timing	Vigor	Bract Color	4"	6"	8"	10"	Tree
	J'Adore Dark Pink	10154	ELS	7.5 weeks	Early	Medium	Pink	✓	✓	✓		
	J'Adore Pink	10381	ELS	7.5 weeks	Early	Medium	Pink	✓	✓	✓		
	J'Adore Soft Pink	10156	ELS	7.5 weeks	Early	Medium	Pink	✓	✓	✓		
	J'Adore White Pearl	10155	ELS	7.5 weeks	Early	Medium	White	✓	✓	✓		



A standout in any setting, Luv U Pink is an explosive plant. The most vigorous in its class, it is suitable for larger containers as well as the landscape. It has a later response time compared to other euphorbias.



Luv U Pink
11109 | 9 weeks

Euphorbia Hybrid | Luv U Pink

Status	Variety Name	Variety Code	Production Farm	Natural Response Time	Timing	Vigor	Bract Color	4"	6"	8"	10"	Tree
	Luv U Pink	11109	ELS	9 weeks	Late	Vigorous	Pink	✓	✓	✓	✓	

Poinsettia | Product Information + Index

Poinsettia | Assortment

Page	Status	Variety Name	Variety Code	Production Farm	Natural Response Time	Timing	Vigor	Bract Color	4"	6"	8"	10"	Tree
-		Advent Red	11008	ELS	6.5 weeks	Very Early	Vigorous	Dark Red	✓	✓	✓	✓	✓
19		Atla	11423	ELS	8 weeks	Mid	Medium	Red	✓	✓	✓		
4, 34	TOP	Autumn Leaves	11391	ELS	8 weeks	Mid	Compact	Golden Peach	✓	✓	✓		
14		Candy Cane	10153	ELS	8 weeks	Mid	Medium	Red + White	✓	✓	✓		
29		Classic Red	11180	ELS	8.5 weeks	Late	Vigorous	Red		✓	✓	✓	✓
29		Classic White	11183	ELS	8.5 weeks	Late	Vigorous	White		✓	✓	✓	✓
23	TOP	Early Polly's Pink	11055	ELS	8 weeks	Mid	Vigorous	Pink		✓	✓	✓	
16		Enduring Marble	11019	ELS	8 weeks	Mid	Medium-compact	Marble	✓	✓	✓	✓	
16		Enduring Pink	11015	ELS	8 weeks	Mid	Medium-compact	Pink	✓	✓	✓	✓	
16		Enduring Red	11010	ELS	8 weeks	Mid	Medium-compact	Red	✓	✓	✓	✓	
16		Enduring White	11013	ELS	8 weeks	Mid	Medium-compact	White	✓	✓	✓	✓	
18	TOP	FabYULEous	10104	ELS	8 weeks	Mid	Medium	Red	✓	✓	✓	✓	
10	TOP	Ferrara	10897	ELS	7.5 weeks	Early	Medium-vigorous	Bright Red	✓	✓	✓	✓	✓
21		Flurry	11051	ELS	8 weeks	Mid	Medium-vigorous	White	✓	✓	✓	✓	
9		Freedom Early Red	11191	ELS	7 weeks	Early	Medium	Red	✓	✓	✓	✓	
9		Freedom Pink	11024	ELS	8 weeks	Mid	Medium	Pink	✓	✓	✓	✓	
9		Freedom Red	11020	ELS	7.5 weeks	Early	Medium	Red	✓	✓	✓	✓	✓
9		Freedom White	11022	ELS	7.5 weeks	Early	Medium	White	✓	✓	✓	✓	✓
2	NEW	Freya Marble	11126	ELS	7.5 weeks	Early	Medium	Marble	✓	✓	✓		
2	NEW	Freya Pink	11057	ELS	7.5 weeks	Early	Medium	Pink	✓	✓	✓		
2	NEW	Freya Red	11421	ELS	7.5 weeks	Early	Medium	Red	✓	✓	✓		
2	NEW	Freya White	11058	ELS	7.5 weeks	Early	Medium	White	✓	✓	✓		
22	TOP	Frozen	11056	ELS	8 weeks	Mid	Medium-vigorous	White	✓	✓	✓	✓	
4, 35	TOP	Golden Glo	11431	ELS	8 weeks	Mid	Compact	Yellow	✓	✓			
29	TOP	Grande Italia	10330	ELS	8.5 weeks	Late	Medium-vigorous	Dark Red		✓	✓	✓	✓
5, 34		Green Envy	11433	ELS	7.5 weeks	Early	Medium-compact	Green	✓	✓	✓		
24		Ice Punch	11216	ELS	8 weeks	Mid	Medium	Red + White	✓	✓	✓	✓	✓
21	TOP	Imperial	10143	ELS	8 weeks	Mid	Medium-vigorous	Red		✓	✓	✓	
44		J'Adore Dark Pink	10154	ELS	7.5 weeks	Early	Medium	Pink	✓	✓	✓		
44		J'Adore Pink	10381	ELS	7.5 weeks	Early	Medium	Pink	✓	✓	✓		
44		J'Adore Soft Pink	10156	ELS	7.5 weeks	Early	Medium	Pink	✓	✓	✓		
44		J'Adore White Pearl	10155	ELS	7.5 weeks	Early	Medium	White	✓	✓	✓		
14		Jubilee Jingle Bells	11036	ELS	8 weeks	Mid	Medium	Red + White	✓	✓	✓	✓	✓
14		Jubilee Pink	11035	ELS	8 weeks	Mid	Medium	Pink	✓	✓	✓	✓	✓
14		Jubilee Red	11030	ELS	8 weeks	Mid	Medium	Red	✓	✓	✓	✓	✓
14		Jubilee White	11033	ELS	8 weeks	Mid	Medium	White	✓	✓	✓	✓	✓
45		Luv U Pink	11109	ELS	9 weeks	Late	Vigorous	Pink	✓	✓	✓	✓	
3	NEW	Noblesse	11068	ELS	8 weeks	Mid	Medium	Red	✓	✓	✓	✓	✓
5, 35	TOP	Norwin Orange	11081	ELS	8 weeks	Mid	Medium	Orange	✓	✓	✓	✓	
22		Polar Bear	11208	ELS	8 weeks	Mid	Medium	White	✓	✓	✓	✓	
7		Premium Early Red	10241	ELS	6 weeks	Very Early	Compact	Red	✓	✓	✓	✓	
7	TOP	Premium Ice Crystal	10244	ELS	7.5 weeks	Early	Compact	Red + White	✓	✓	✓	✓	
7		Premium Lipstick Pink	10235	ELS	7.5 weeks	Early	Medium-compact	Pink	✓	✓	✓	✓	
7		Premium Marble	10249	ELS	7.5 weeks	Early	Medium-compact	Marble	✓	✓	✓	✓	
8		Premium Picasso	10234	ELS	7.5 weeks	Early	Compact	Cream + Pink	✓	✓	✓	✓	
8	TOP	Premium Polar	10243	ELS	7.5 weeks	Early	Compact	White	✓	✓	✓	✓	
8	TOP	Premium Red	10230	ELS	7 weeks	Early	Medium-compact	Red	✓	✓	✓	✓	
8		Premium White	10233	ELS	7 weeks	Early	Medium-compact	White	✓	✓	✓	✓	
10		Prestige Early Red	11151	ELS	7.5 weeks	Early	Medium	Red	✓	✓	✓	✓	✓
-		Prestige Maroon	11156	ELS	8.5 weeks	Late	Medium	Maroon	✓	✓	✓	✓	✓
15	TOP	Prestige Red	11150	ELS	8 weeks	Mid	Medium	Red	✓	✓	✓	✓	✓
15	TOP	Prestigious	10120	ELS	8 weeks	Mid	Medium	Red	✓	✓	✓	✓	✓
3	NEW	Rapid Red	11121	ELS	6 weeks	Very Early	Medium-Vigorous	Red	✓	✓	✓	✓	✓
28	TOP	Red Glitter	11317	ELS	8.5 weeks	Late	Medium	Red + White	✓	✓	✓	✓	✓

Poinsettia | Assortment

Page	Status	Variety Name	Variety Code	Production Farm	Natural Response Time	Timing	Vigor	Bract Color	4*	6*	8*	10*	Tree
3, 28		Red Jewel	11072	ELS	8.5 weeks	Late	Medium	Red	✓	✓	✓		
3, 14		Red Ribbons	11065	ELS	8 weeks	Mid	Medium	Red	✓	✓	✓		
19	TOP	Red Soul	11323	ELS	8 weeks	Mid	Medium-compact	Red	✓	✓	✓		
20	TOP	Runway Red	10101	ELS	8 weeks	Mid	Medium	Red	✓	✓	✓	✓	
-		Santa Baby	10122	ELS	6 weeks	Very Early	Compact	Red	✓				
31	TOP	Southern Belle	10908	ELS	8.5 weeks	Late	Medium-compact	Red		✓	✓	✓	✓
30		Tapestry	11107	ELS	8.5 weeks	Late	Compact	Red	✓	✓	✓		
23		Tidings Dark Pink	11049	ELS	8 weeks	Mid	Medium	Pink Dark Pink	✓	✓	✓	✓	
18	TOP	Viking Cinnamon	10657	ELS	8 weeks	Mid	Medium	Pink Orange	✓	✓	✓	✓	✓
20		Viking Pro	10144	ELS	8 weeks	Mid	Medium	Red	✓	✓	✓	✓	
18		Viking Red	10650	ELS	8 weeks	Mid	Medium	Red	✓	✓	✓	✓	✓
30		Winter Rose Dark Red	11162	ELS	8.5 weeks	Late	Medium-compact	Dark Red	✓	✓	✓		✓
11	TOP	Winter Rose Early Red	10993	ELS	7.5 weeks	Early	Compact	Red	✓	✓	✓		

Poinsettia | Drops & Substitutions

2025 | Drops & Substitutions List

Status	Variety Name DROPS	Variety Code	Status	Variety Name SUBSTITUTION #1	Variety Code SUBSTITUTION #1	Variety Name SUBSTITUTION #2	Variety Code SUBSTITUTION #2
DROP	EuroGlory Red	10220	SUB	Grande Italia	10330	Classic Red	11180
DROP	Jester Red	10994	SUB	Premium Red	10230	Rapid Red	11121
DROP	Marblestar	10419	SUB	Freya Marble	11126	Enduring Marble	11019
DROP	Maren	10416	SUB	Early Polly's Pink	11055	Tidings Dark Pink	11049
DROP	Redlight Bright Red	10182	SUB	Freya Red	11421	Red Ribbons	11065
DROP	Tidings Light Pink	11048	SUB	Tidings Dark Pink	11049	Premium Ice Crystal	10244

2024 | Drops & Substitutions List

Status	Variety Name DROPS	Variety Code	Status	Variety Name SUBSTITUTION #1	Variety Code SUBSTITUTION #1	Variety Name SUBSTITUTION #2	Variety Code SUBSTITUTION #2
DROP	Autumn Leaves	11326	SUB	Autumn Leaves 2016	11391	-	-
DROP	Bravo Bright Red	10360	SUB	Premium Red	10230	-	-
DROP	Bravo Pink	10894	SUB	Premium Lipstick	10235	-	-
DROP	Bravo White	10895	SUB	Premium White	10233	-	-
DROP	EuroGlory Red	10220	SUB	Southern Belle	10908	-	-
DROP	Matinee Bright Red	10522	SUB	Runway Red	10101	-	-
DROP	Prima 2.0	10524	SUB	Atla	11423	-	-
DROP	Scandic Early	10304	SUB	Alta	11423	-	-
DROP	White Wonder	10384	SUB	Flurry	11051	-	-
DROP	Confetti Garden Glam	45146	SUB	-	-	-	-
DROP	Confetti Garden Glitz	45147	SUB	-	-	-	-

Disclaimer: Although Dümme Orange® has composed this brochure with great care, the information contained within is for general informational purposes only. Dümme Orange® makes no representations or warranties of any kind, express or implied, about the information contained herein. In no event will any company part of Dümme Orange® be liable for any loss or damage including without limitation, direct or indirect or consequential loss or damage, or any loss or damage whatsoever arising from loss of turnover or profits arising out of, or in connection with the information contained herein. The use of the "TM" and "®" symbols herein indicate the trademarks and registered trademarks of Dümme Orange® that are used and may be registered in Canada, Germany, The Benelux, The European Union, The United States and in other countries.



DummenOrangeNA



DummenOrangeNA



DummenOrangeNorthAmerica



Dummen Orange

na.dummenorange.com



Poinsettia
Red Ribbons
11065

Poinsettias
2025 Highlights

